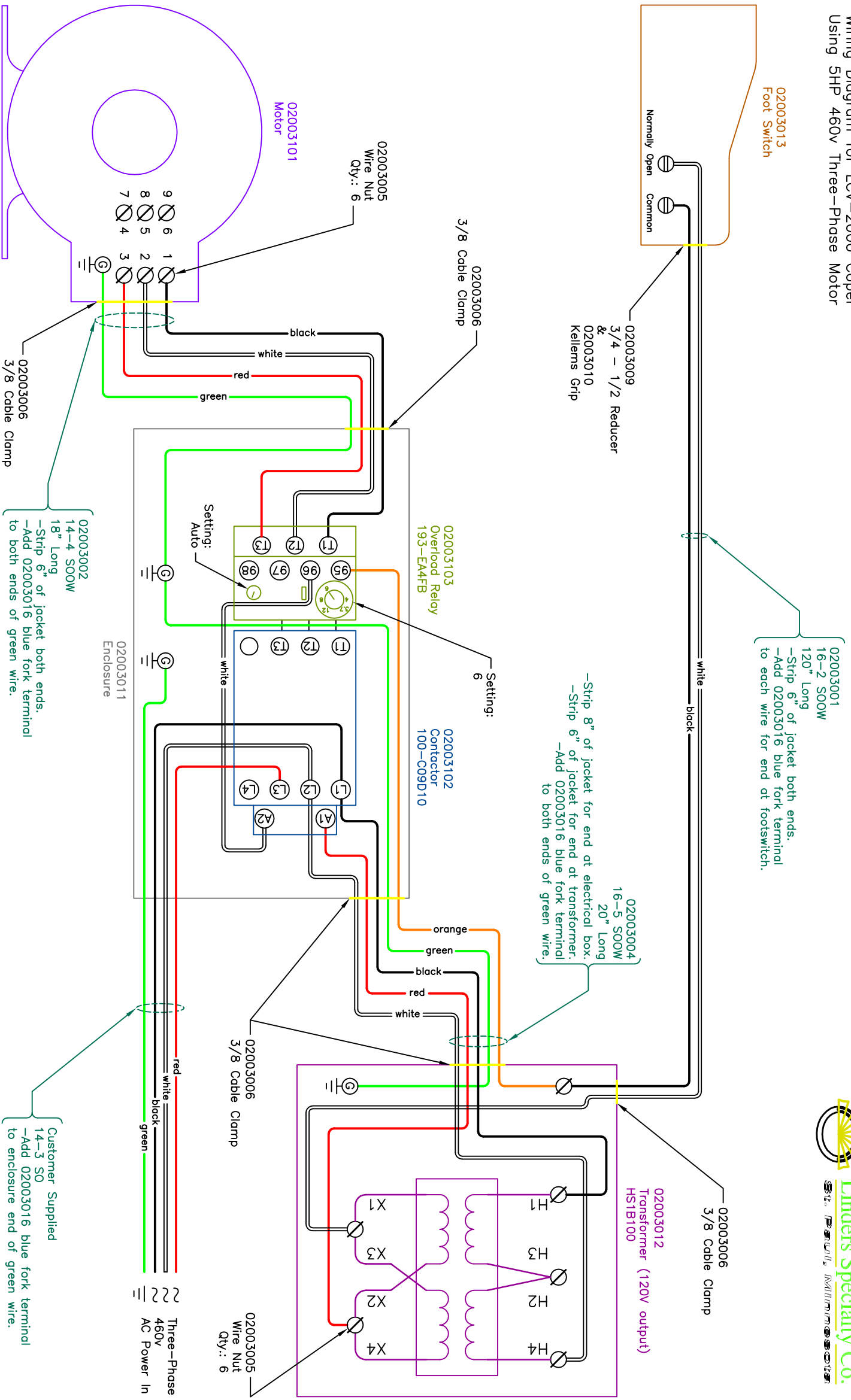


Wiring Diagram for LCV-2000 Copper  
Using 5HP 460V Three-Phase Motor



02003001  
16-2 SOOW  
120" Long  
-Strip 6" of jacket both ends.  
-Add 02003016 blue fork terminal  
to each wire for end at footswitch.

02003004  
16-5 SOOW  
20" Long  
-Strip 8" of jacket for end at electrical box.  
-Strip 6" of jacket for end at transformer.  
-Add 02003016 blue fork terminal  
to both ends of green wire.

02003002  
14-4 SOOW  
18" Long  
-Strip 6" of jacket both ends.  
-Add 02003016 blue fork terminal  
to both ends of green wire.

Customer Supplied  
14-3 SO  
-Add 02003016 blue fork terminal  
to enclosure end of green wire.