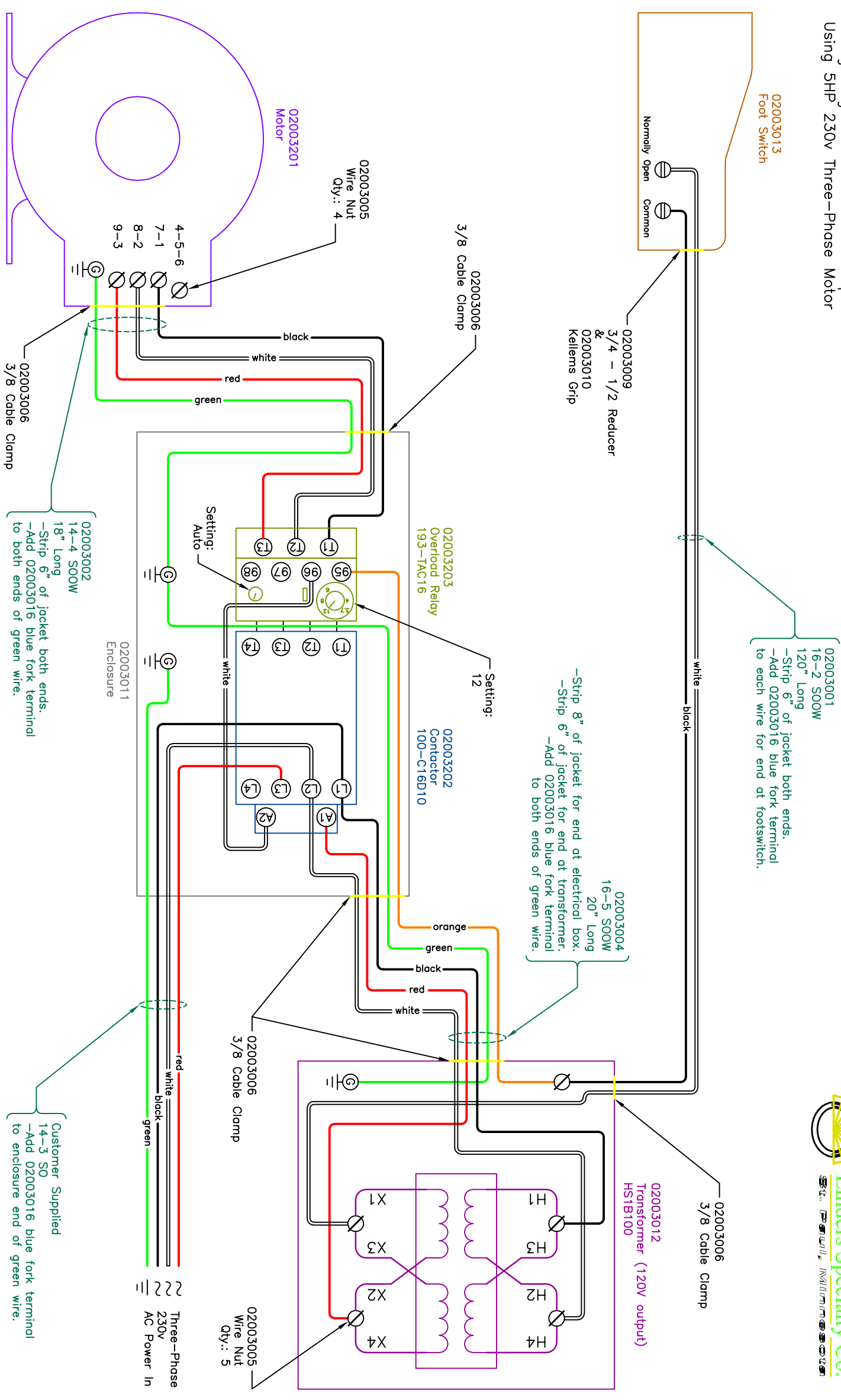


Wiring Diagram for LCY-2000 Copper
Using SHP 230V Three-Phase Motor



02003001
16-2 SOOW
120" Long
-Strip 6" of jacket both ends.
-Add 02003016 blue fork terminal
to each wire for end at footswitch.

02003004
16-5 SOOW
20" Long
-Strip 8" of jacket for end at electrical box.
-Strip 6" of jacket for end at transformer.
-Add 02003016 blue fork terminal
to both ends of green wire.

02003203
Overhad Relay
193-TAC16
Setting:
12

02003202
Contactor
100-C16D10
Setting:
Auto

02003002
14-4 SOOW
18" Long
-Strip 6" of jacket both ends.
-Add 02003016 blue fork terminal
to both ends of green wire.

02003006
3/8 Cable Clamp

Customer Supplied
14-3 SO
-Add 02003016 blue fork terminal
to enclosure end of green wire.

Three-Phase
230V
AC Power In